

Important Announcement Regarding School Lunch Fee

1. School Lunch Fee Payment Change to Public Accounting

Since April 2024, Sakai City has changed the payee of school lunch fees from each school to Sakai City. Starting from June 2025, the Universal School Lunch Provision System will be implemented at Sakai municipal junior high schools. Under this system, Sakai City will be the payee for school lunch fees at all Sakai municipal junior high schools except for Oizumi Junior High School.

You need to submit a School Lunch Application and Direct Debit Request Form to receive school lunches and to make payments via direct debit. Once you complete these procedures, no additional steps will be required even if your child advances to higher levels of education or changes schools within Sakai municipal schools (elementary, junior high, or special needs education schools).

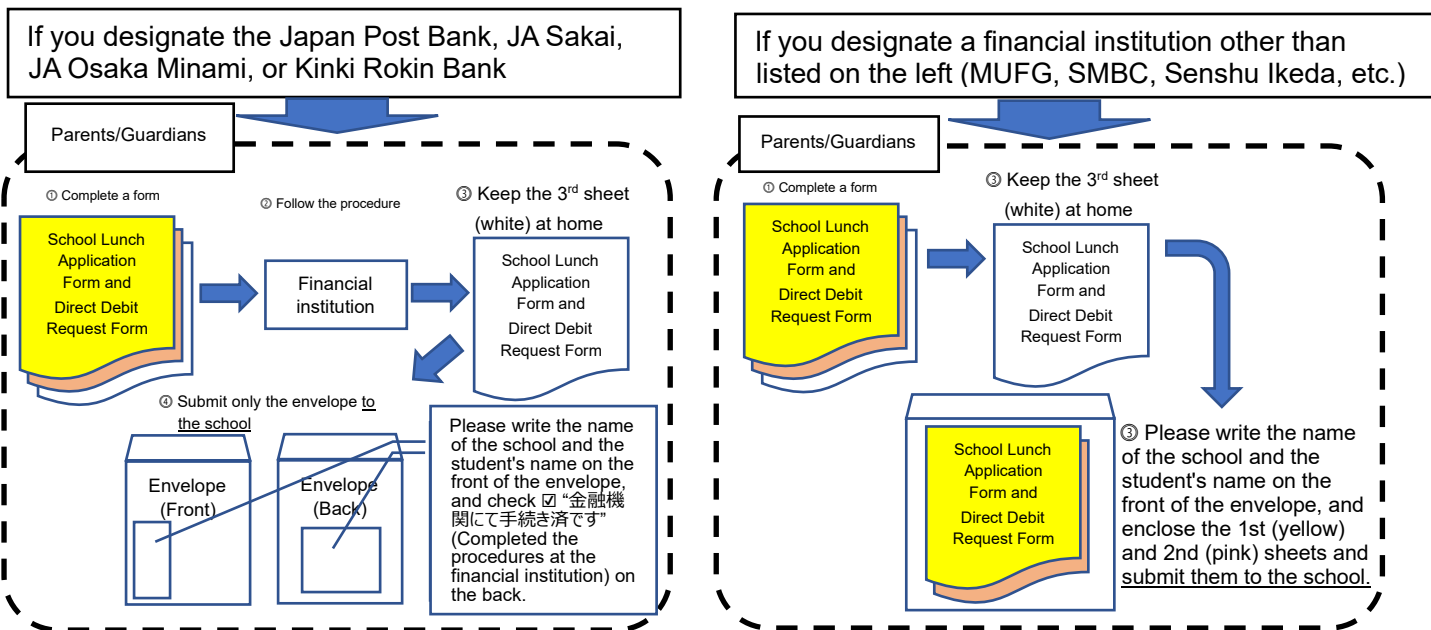
School Lunch Application Form and Direct Debit Request Form

- Please complete the required fields by referring to the example on the last page. A separate form needs to be submitted for each student.
- Even if your direct debit account for school expenses has been registered, additional procedures are required.
- In general, school lunch expenses must be paid via direct debit.

Accepted Financial Institutions: **For underlined institutions, ensure you follow the procedures directly at their counter.**

Banks	Shinkin Banks	Others
Mizuho, MUFG, SMBC, Resona, San ju San, Bank of Kyoto, Kansai Mirai, Senshu Ikeda, Nanto, Kiyo, Awa, Iyo, Tokushima Taisho, <u>Japan Post</u>	Osaka, Osaka Co-sei, Osaka City, Osaka Shoko, Eiwa, Amagasaki	Daido Shinyo Kumiai, Seikyo Shinyo Kumiai, Nozomi Shinyo Kumiai, Kinki Sangyo Shinyo Kumiai, Mire Shinyo Kumiai, <u>Kinki Rokin, JA Sakai, JA Osaka Minami</u>

Current Students: Procedures vary depending on the financial institution with which you wish to set up direct debit.

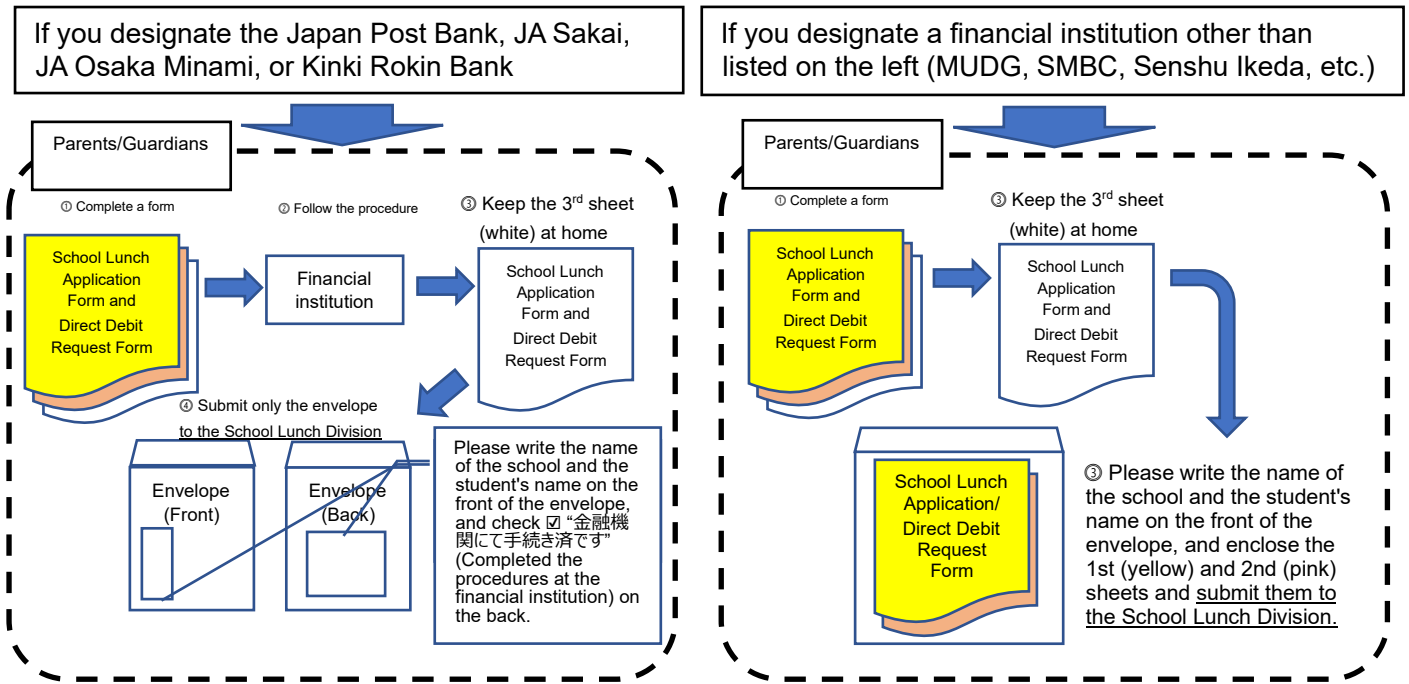


Where to submit: Your child's school

Deadline for 2nd grade junior high school students: Friday, September 27, 2024

1st grade junior high school students: Friday, October 25, 2024

New 1st grade students: Procedures vary depending on the financial institution with which you wish to set up direct debit.



Where to submit/Deadline for new 1st graders: to the School Lunch Division by Friday, December 20, 2024

3. School Lunch Fee

The school lunch fees and direct debit dates (payment due dates) for the 2025 school year are as follows (9 times a year). This amount is the current estimate (including the amount of the Support Benefit for Soaring Prices). **The school lunch fee amount may change in the future.**

	First	Second	Third	Fourth	Fifth	Sixth	Seventh	Eighth	Ninth	
Direct Debit Date (Payment date)	Jul. 25	Aug. 25	Sept. 25	Oct. 27	Nov. 25	Dec. 25	Jan. 26	Feb. 25	Mar. 25	
Fee	Elementary School	¥5,610	¥5,610	¥5,610	¥5,610	¥5,610	¥5,610	¥5,610	¥5,610	TBD
	Junior High School	¥5,325	¥5,325	¥5,325	¥5,325	¥5,325	¥5,325	¥5,325	¥5,325	TBD
	Special Needs Education School	¥5,355	¥5,355	¥5,355	¥5,355	¥5,355	¥5,355	¥5,355	¥5,355	TBD

- The school lunch fee is ultimately paid based on the number of times it's served during the year. The last school lunch payment will be decided during the final billing period.
- If the direct debit date falls on a Saturday, Sunday or holiday, the withdrawal will be carried out on the following business day of the designated financial institution.
- If the direct debit cannot be made due to insufficient balance or other reasons on the designated payment date, the withdrawal will be attempted again on the 10th of the following month (or the next business day if it is a Saturday, Sunday or holiday)*.

*There may be some months when it will not be possible to reschedule withdrawals.

- The annual payment amount and the payment amount for each billing period will be notified around mid-July each year.
- If you wish to stop receiving all or part of a school lunch due to a food allergy or other reason, please consult with the student's school.
- If opting out of milk, bread, or rice due to food allergies or other reasons, the fee amount may be reduced for elementary or special needs education students. For junior high school students, the reduction applies if opting out of milk or rice.

School Lunch Fee Payment Procedures Q&A

Q1 What happens if I fail to submit documents by the deadline?

A1 If the documents are not submitted by the deadline, direct debit may not be available. In this case, please pay at a financial institution or convenience store using the payment slip issued by Sakai City. Please note that you cannot combine this month's payment with the next payment period's direct debit payment.

Q2 What procedures are required to opt out of milk, bread, or rice due to food allergy or other reason?

A2 A Food Allergy Accommodation Form (Tabemono Arerugi Taiou Iraisho 食物アレルギー対応依頼書) and a School Life Management Guidance Form (Gakkoseikatsu Kanri Shidohyo 学校生活管理指導表) must be submitted to the school by the date specified by each school. Please consult each elementary or special needs education school for details. Details for junior high schools will be provided later by each school. If you opt out of milk, bread, or rice, you will also need to submit a School Lunch Change, Suspension, or Resumption Notification (Gakkou Kyusyoku Henko/Teishi/Saikai Todoke 学校給食(変更・停止・再開)届) to the city.

Q3 What about if you are receiving public assistance (Seikatsu Hogo 生活保護) or School Expense Subsidy (Shugaku Enjyo 就学援助)?

A3 Even if you are receiving assistance for school lunch fee from either of the above, you must still apply to receive school lunch and register for an account for any refunds for school lunch fee, etc. Please submit a School Lunch Application and Direct Debit Request Form.

Q4 How should I write the details of my Japan Post Bank account if I use Japan Post Bank?

A4 Please refer to the information below on how to write the details of your account when using Japan Post Bank.

1. The account number will have up to 8 digits, those less than 8 digits have a "0" (zero) automatically redacted. It will end in "1".

2. The code number has 5 digits, starting with "1" and ending in "0".

E.g. the bankbook details to the right would be filled in as shown below.

Code Number: Align to the left

Account Number*: Align to the right

*If the account number is not 8 digits, please add a "0" (zero) at the start to make it 8 digits exactly.

Bankbook (Example)

Code Number 11940	Account Number 1234561
Name _____	

ゆうちょ銀行	契約種別	通帳記号					※	通帳番号 (右づめでご記入ください。)							
	30	1	1	9	4	0		0	1	2	3	4	5	6	1
	払込先口座番号	00910-9-961068						払込先加入者名				堺市会計管理者			

※欄は、通帳の記号の後にハイフン(-)と数字がある場合のみご記入ください。

Visit the city's website for more Q&As

For any questions or inquiries, please contact:

Sakai City Board of Education Secretariat, School Lunch Division, Admin

3-1 Minami Kawaramachi, Sakai-ku, Sakai City 590-0078

Tel: 072-228-7489 Fax: 072-228-7256

URL (https://www.city.sakai.lg.jp/kosodate/kyoiku/gakko/yutakana/hoken/gakkou_kyuushoku/reiwa6nenn4gatsukara.html)

QR Code:



School Lunch Application Form and Direct Debit Request Form Example

堺市学校給食費の管理に関する要綱様式第1号(第3条関係)
堺市学校給食費口座振替事務取扱要綱様式第1号(第5条、第6条関係)

① 金融機関控

- Enter the name of a **parent/guardian** (with katakana above), relationship to the student, address, and contact details* here.
*A cell phone number is recommended.

- Enter the date on which you filled out the form.

長 殿 [学校給食申込]
公金取扱金融機関 御中 [口座振替・自動払込]

学校給食申込書 兼 堺市学校給食費

預金口座振替依頼書 自動払込利用申込書

は、下記の児童・生徒に学校給食を受けさせるため、下記のとおり申し込みます。学校給食費は、の支払方法でお支払いします。また、申し込みにあたり、裏面の注意事項及び同意事項を厳守します。

記入日 令和 6 年 9 月 1 日

- Enter the student's school, grade, class, and student number.
- Enter the student's name (with katakana above).

保護者	住所	〒 590-0078 堺区南瓦町3番1号		
	フリガナ	サカイ タロウ		児童・生徒から見た続柄
	氏名	堺 太郎		父
	連絡先	(日中に連絡がつく番号) 080-1234-5678 ※ご記入の連絡先(父・母・)		

- Check either "Direct debit/automatic payment" (口座振替・自動払込) or "payment slip" (納付書). In general, "direct debit" should be selected.

児童・生徒	学校名	堺市立 堺第一	<input type="checkbox"/> 小学校 <input checked="" type="checkbox"/> 中学校
	フリガナ	サカイ ジロウ	<input type="checkbox"/> 支援学校(分校) [<input type="checkbox"/> 小学部 <input type="checkbox"/> 中学部]
	氏名	堺 次郎	学年組出席番号 <input type="checkbox"/> 新入生、転入生(年) <input checked="" type="checkbox"/> 2 年 3 組 8 番

★学校給食費の支払方法を☑してください。(「口座振替・自動払込」が原則です。)

<input checked="" type="checkbox"/>	口座振替・自動払込(裏面の約定(ゆうちょ銀行以外金融機関)を以てし、口座振替・自動払込)
<input type="checkbox"/>	納付書(後日郵送する納付書にてお支払い)

Complete the form following the example.

「ゆうちょ銀行以外の金融機関」又は「ゆうちょ銀行」のどちらか一方に保護者名義の口座をご記入ください。

- Enter the ordinary deposit account number under the parent's name (Either parent's account name is acceptable.)
- Align the account/bankbook number to the right when filling it in.
- If you make a mistake, draw a double line through the error and affix your registered seal when you opened the account.

金融機関CD 1234 支店CD 123 払込開始年月 令和 7 年 7 月

ゆうちょ銀行以外の金融機関	堺	銀行	堺東	本店	預金種目	口座番号(右づめでご記入ください。)						
		信用金庫		支店	1. 普通	1	2	3	4	5	6	7
		信用組合		支所								
		労働金庫		出張所								
		農業協同組合		営業部								

ゆうちょ銀行	契約種別	30	通帳記号					※	通帳番号(右づめでご記入ください。)
	払込先口座番号	00910-9-961068			払込先加入者名	堺市会計管理者			
	※欄は、通帳の記号の後にハイフン(-)と数字がある場合のみご記入ください。								

児童・生徒から見た続柄	フリガナ	サカイ ハナコ		お届出印
	口座名義人	堺 花子		
	預金者住所(ゆうちょ銀行のみ)			

振替(払込)日は、7月から3月までの各月25日
振替(払込)日が金融機関の休業日となる場合

金融機関使用欄	(不備事由)ゆうちょ銀行を除く	
	1. 預金取引なし	5. その他
	2. 記載事項等相違	
	店名、預金種目、口座番号、口座名	
	3. 印鑑相違	
	4. 印鑑不鮮明	

【お問合せ先】〒590-0078 堺市堺区南瓦町3

- Ensure that the seal impression is clear.
- If it is not clear, affix on the blank space on the left.
- If you are unsure about your registered seal, please ask the financial institution in advance.
- If you have lost your seal, please register a new one.
- If you are using an account created without registering a seal, seek advice from your financial institution.

① 金融機関控