

## Kyoo wa yasumimasu

Shokuin : Hai, Kokusai kooryuu puraza desu.

Guen : **Moshi moshi, betonamu no Guen desu ga, Segawa-san o onegai-shimasu.**

Shokuin : Hai, shooshoo o-machi kudasai.

Segawa : Moshi moshi, Segawa desu.

Guen : Betonamu no Guen desu.

Segawa : Aa, Guen-san, konnichiwa. Doo shimashita ka.

Guen : Anoo, **kyoo wa chotto yooji ga arimasu. nihongo-kyooshitsu o yasumimasu.**

Segawa : Soo desu ka. Wakarimashita.

Guen : **Sumimasen. Yoroshiku onegai-shimasu.**

Segawa : Ja, mata raishuu kite kudasai. Matte imasu.

Guen : **Hai. Ja, shitsuree-shimasu.**



Betonamu no Guen desu ga ...

Aa, Guen-san, konnichiwa.



ば  
め  
ん  
の  
に  
ほ  
ん  
ご

## Kyoto made ikura desu ka

Nisa : Chotto, sumimasen. **Kyoto made ikura desu ka.**

Nihonjin : Eeto, 560 (go-hyaku roku-juu)-en desu.

Nisa : Doomo arigatoo gozaimasu.

Nisa : Sumimasen. **Kyoto wa nan-bansen desu ka.**

Ekiin : 7 (nana) -bansen to 8 (hachi) -bansen desu.

Nisa : Doomo.

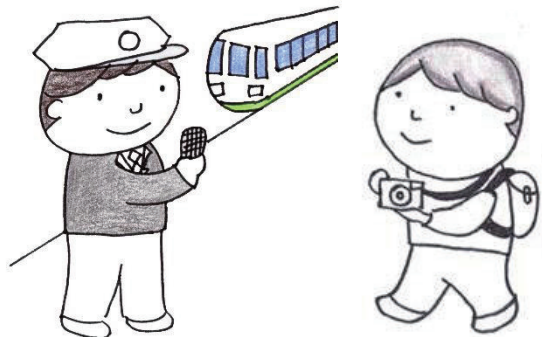
Nisa : Kore wa **Kyoto ni ikimasu ka.**

Ekiin : Iie, ikimasen.

Kyoto wa tsugi no shinkaisoku ni go-joosha kudasai.

8 (hachi) -bansen desu.

Nisa : Wakarimashita. Arigatoo.



## Kore o kudasai

(Depaato annai kauntaa)

Maria : Anoo, sumimasen. **Kutsu wa nan-gai desu ka.**

Annai gakari: Fujin-gutsu (Shinshi-gutsu) wa 2 (ni)-kai de gozaimasu.

Maria : Dooomo.

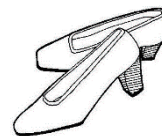
( Kutsu-uriba )

Ten'in : Nani ka o-sagashi desu ka.

Maria : .....

Ten'in : Donna kutsu o o-sagashi desu ka.

Maria : Chotto **Mite iru dake desu.**



Maria : Chotto sumimasen.

Ten'in : Hai.

Maria : (Kutsu o sashite) **Kore, 25 (ni-juu go) -senchi, arimasu ka.**

Ten'in : O-shirabe shimasu node, shooshoo o-machi kudasai.

Ten'in : O-matase shimashita.

Kochira, 25 (ni-juu go) -senchi desu.

Maria : Chotto haite mo ii desu ka.

Ten'in : Doozo.

Ten'in : Ikaga desu ka.

Maria : Ii desu ne. **Kore o kudasai.**

Ten'in : Arigatoo gozaimasu.



## Koko ni ikitai n desu ga

Pon : Anoo, sumimasen.

Tsuukoonin: Hai.

Pon : (Resutoran no chirashi o misete)

**Koko ni ikitai n desu ga** . . . .

Tsuukoonin: Etto . . . Zeemusho no chikaku desu ne.

Pon : **Zeemusho ?**

Tsuukoonin: Asoko ni biru ga arimasu ne.

Pon : Hai.

Tsuukoonin: Are ga zeemusho desu.

Ano biru no ushiro ni konbini ga arimasu.

Pon : Konbini **desu ne**.

Tsuukoonin: Hai. Soko o migi ni itte kudasai.

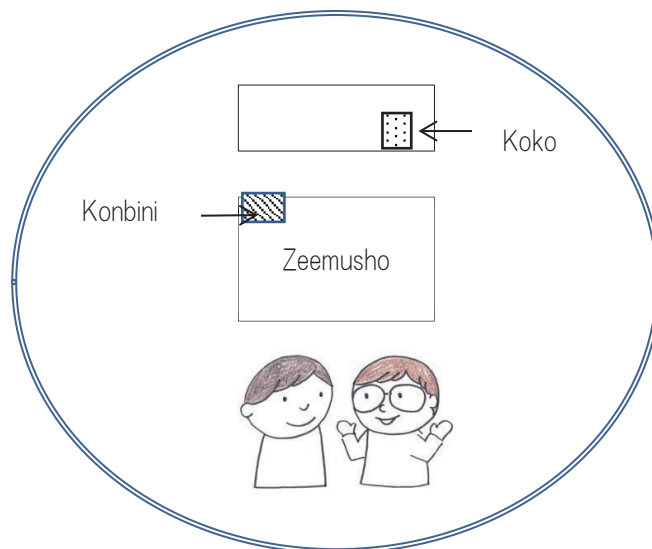
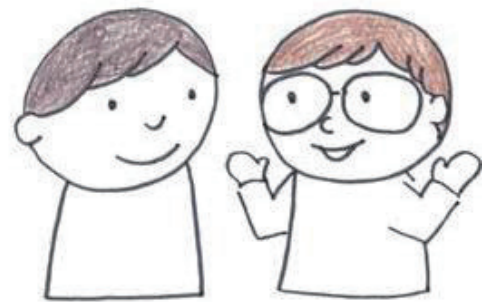
Pon : Migi **desu ne**.

Tsuukoonin: Hai. Hidari ni arimasu yo.

Pon : Hidari **desu ne**.

Doomo arigatoo gozaimashita.

Tsuukoonin: lie.



ば  
め  
ん  
の  
に  
ほ  
ん  
ご

## Kaban o wasureta n desu ga

(Densha o orite wasuremono ni kizuki, ekiin ni iu)

Choo : Anoo, sumimasen.

Ekiin : Hai.

Choo : Ima no densha ni **kaban o wasureta n desu ga.....**

Ekiin : Nanba-iki no kyuukoo desu ka.

Choo : Hai.

Ekiin : Nanryoo-me desu ka.

Choo : **Ichiban mae desu. Amidana no ue desu.**

Ekiin : Donna kaban desu ka.

Choo : **Chairo no kaban desu.**

**Konna kaban desu.** (e o kaku)

Ekiin : O-shirabe shimasu node , shooshoo o-machi kudasai.

Choo : Hai.

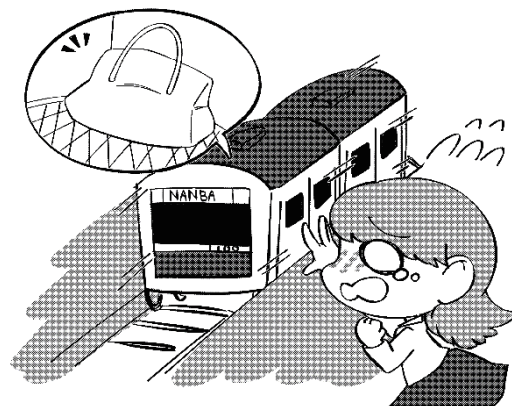
Ekiin : Arimashita yo. Nanba-eki de o-azukari-shite imasu ga,  
ima kara ikimasu ka.

Choo : Hai.

Ekiin : Ja, Nanba-eki no ekichoo-shitsu ni itte kudasai.

Choo : Wakarimashita.

Doomo arigatoo gozaimashita.



## Doo shimashita ka

Kumaaru : Sumimasen. **Onegai-shimasu.** (Hokenshoo o dasu.)

Uketsuke : Hai, kochira wa hajimete desu ka.

Kumaaru : Hai.

Uketsuke : Dewa, kore ni kinyuu-shite kudasai.

(Monshinhyoo o watasu.)

Kumaaru : **Kinyuu? Nan desu ka.**

Ukestuke : Kaite kudasai.

Kumaaru : **Sumimasen. Wakarimasen.**

Ukestuke : Dewa, watashi ga kikimasu node.

Kyoo wa doo nasaimashita ka.

Kumaaru : **Atama ga itai desu.**

Uketsuke : Dewa, kochira de o-machi kudasai. O-namae o yobimasu node.



Uketsuke : Kumaaru-san, Kumaaru-san, naka e doozo.

Kumaaru : Hai.

Isha : Doo shimashita ka.

Kumaaru : **Kinoo kara atama ga itai desu.**

Isha : Netsu wa arimasu ka.

Kumaaru : Hai, sukoshi... **Nodo mo itai desu.**

Isha : Ja, chotto mimashoo.

A, akaku natte imasu ne.

Isha : Ja, kusuri o dashimasu kara,  
sore o nonde yukkuri yasunde kudasai.

Kumaaru : Hai. **Arigatoo gozaimashita.**

Isha : Odaiji ni.

