



Sakai's History and Culture featuring Mozu Mounded Tombs



SAKAI CITY MUSEUM

Daisen Park, 2 Mozu Sekiun-cho, Sakai-ku, Sakai-shi, Osaka 590-0802
Phone: 072-245-6201 Fax: 072-245-6263
<https://www.city.sakai.lg.jp/kanko/hakubutsukan/> (Japanese)



For the city
website



Instagram



© YABUCHI Satoshi



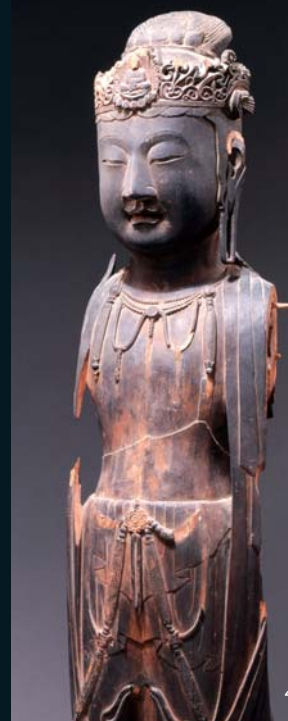
1



2



3



4

1. **Dog-shaped Haniwa clay figure:** Excavated at the Mozu-umemachi kiln site (mid-5th Century).
2. **Model of Street in Sakai:** Diorama that represents Sakai's main street in the early-Edo period (early 17th century).
3. **Large Keicho Period Matchlock Gun (designated as a Tangible Cultural Property of Osaka Prefecture):**
Produced jointly by gunsmiths from Sakai and Omi-Kunitomo. The largest matchlock gun in the world (3 meters/135kg, early 17th century).
4. **Standing Figure of Bodhisattva (designated as an Important Cultural Property of Japan):**
A sandalwood statue introduced to Mozu area. The late-6th to early-7th century. Presumably carved in Sui dynasty, China.

* Some items on this leaflet are not in the permanent exhibition.

堺市
茶室

TEA HOUSES

Would you like a bowl of *matcha*
after learning history at the museum?

The museum has two tea houses in the premises, which are registered as tangible cultural properties of Japan.



Obai-an

Matsunaga Yasuzaemon, Japan's electricity tycoon, received this tea house from an old family in Imai-cho in Kashiwara City, Nara. It was relocated from Odawara City, Kanagawa, when Sakai City Museum opened in 1980.



Shin-an

Built by Ogi Rodo, a great master of Sukiya (tea house) architecture, in 1929. Relocated from Tokyo when Sakai City Museum opened in 1980.

Matcha service (at Shin-an): fee-based
10:00-16:00 (only available during museum-open days)
(The garden is open 9:30-16:30 free of charge)

SAKAI CITY TEA HOUSE Phone: 072-247-1447



Nine-storied pagoda from Jodoji Temple

Designated as an Important Cultural Property of Japan. Relocated from Jodoji Temple, Chihaya-akasaka Village. It has an engraved inscription "The 4th year of Kagen (1306)".

PAID AREA

* Some parts may not be exhibited during temporary exhibitions.

- 1 Ancient Age: The Times of *Kofun*
- 2 Middle Age: Sakai in the Middle Age
- 3 Early-modern to Modern Age:
Industry and Culture of Sakai
- 4 Religious Culture of Sakai /
From the Treasure House of the Museum
- 5 Temporary Exhibition Room
Temporary exhibitions are held several times per year.
- 6 Cultural Heritage Exhibition Room:
Passing Down to Future Generations



【Above】Exhibition Room (Ancient Age)

【Right】Mozu Mounded Tombs Theater (free)

You can enjoy an aerial walk over the huge mounded tombs in Mozu with a 200-inch screen.



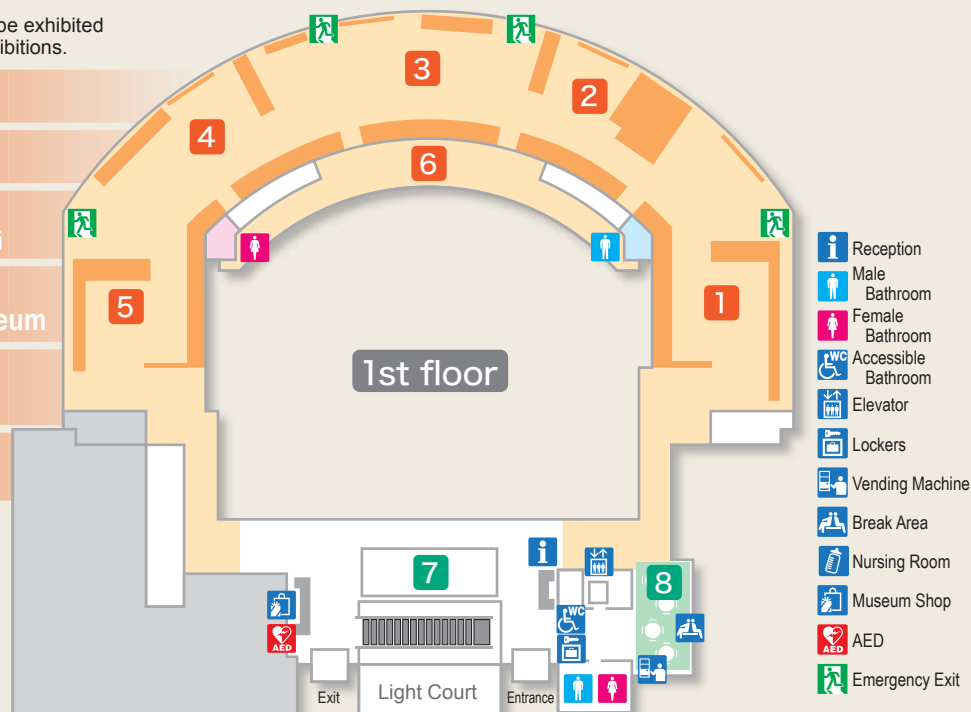
FREE AREA

- 7 Mozu Mounded Tombs Theater
- 8 Mozu Mounded Tombs Exhibit Corner (Break Area)
- 9 Activity Corner

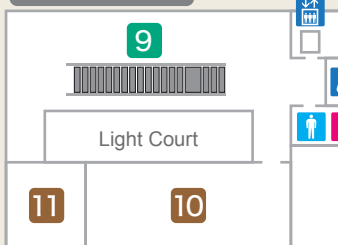
EVENT AREA

* Used for events.

- 10 Museum Hall
- 11 Study Room



Basement



Mozu Mounded Tombs Exhibit Corner (Break Area, free of charge)

Cultural Heritage Exhibition Room: Passing Down to Future Generations



Activity Corner (free)

Let's feel 3D puzzles of potteries and haniwa, or reproduction of bronze mirrors.



ADMISSION

Adults: 200 yen (160 yen)

High school/University students: 100 yen (70 yen)

Elementary/Junior high school students: 50 yen (30 yen)

- * Fees in the parenthesis are for groups of 20 or more.
- * Residents of Sakai City of 65 and above are admitted free of charge. (ID required)
- * Persons with disabilities are admitted free of charge. (ID required)
- * Elementary or middle high school students living or attending school in Sakai City are admitted free of charge.
- * Fees are changed during special exhibitions.

MUSEUM HOURS

- Open daily: 9:30-17:15 (last entry: 16:30)
- Closed: Mondays except national holidays, Year-end and New Year holidays

Mozu Mounded Tombs Visitor Center (free of charge)

- Open daily: 9:00-18:00
- Closed: Year-end and New Year holidays

GETTING HERE

- Train: 500m from Mozu station (JR Hanwa Line)
- Bus: 280m from Sakaishi Museum bus stop (10 minutes by No. 40, from Sakaihigashi station, Nankai Line)
- Parking: Daisen Park No.3 Parking is the closest. (on the Southeast of Nintoku-tenno-ryo Kofun)

