

Mozu Kofungun Theater

Step back in time and experience the World Heritage candidate ancient mounded tomb group

The Mozu and Furuichi Kofungun are two large groups of ancient burial mounds (*kofun*) which jointly form a candidate for inscription on the UNESCO World Heritage List as the Mozu-Furuichi Kofungun (Ancient Mounded Tomb Group).

The Mozu Kofungun includes Nintoku-tenno-ryo Kofun which is the world's largest mounds in terms of area. Besides constituting a precious legacy that is the pride of Sakai, it symbolizes the mounded tomb culture of ancient Japan. The Mozu Kofungun Guidance Area helps visitors to feel the majesty of the tomb group and learn about its historical value and appeal.

In the Guidance Area, you will find the Mozu Kofungun Theater. It is equipped with a large 200-inch screen and shows VR* programs that use high-definition computer graphics to give visitors a look at the past and present appearances of Nintoku-tenno-ryo Kofun and other tombs in the Mozu Kofungun.

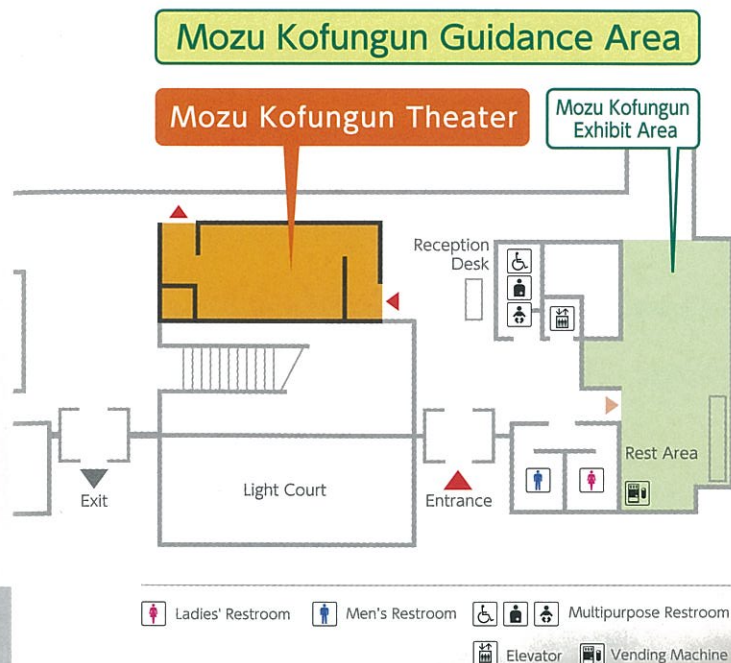
Outline of the Theater

Floor area: about 57 m²

Screen area: about 200 in. (about 4.3m x 2.4 m)

Projector: full Hi-Vision specifications(1,920 x 1,080 pixels)

Number of seats: 30 (including 10 seats that can be converted into 4 seats with wheelchair access)

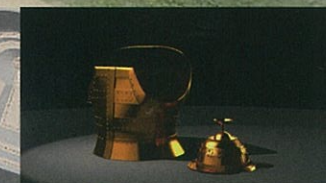


* VR (virtual reality) technology

This image technology gives viewers the feeling of being in the three-dimensional space on the screen while freely moving amongst exquisitely detailed computer-generated 3D images. Projection on a large screen further deepens viewers' feeling of immersion.

Navigation Edition

The navigation edition enables manipulation of the projection by means of a controller, so that viewers can "fly" freely over the Mozu Kofungun, see the ancient and current appearance of major mounded tombs or view photos and explanations of the artifacts related to each tomb and the results of excavation studies. (Ordinarily, the theater shows the regular edition of the two programs. The navigation edition is screened on the occasion of special events, with control and explanation by a commentator.)



Program titles

The programs were produced using laser survey data and aerial photographs of the Mozu-Furuichi Kofungun as well as the results of excavations and research studies of individual tombs in Mozu and in other regions which date to the same period. Visitors can enjoy images that will give them the sensation of flying over the tomb group as well as views of Nintoku-tenno-ryo Kofun, complete with *fukiishi* cladding stones and *haniwa* clay figures, which shows how it may have looked in the mid fifth century when it was built. Each of these virtual reality video footage is 12 minutes in duration.

Program A

"The Mozu Kofungun, Ancient Tumulus Cluster - Transcending Time -"



Program B

"Ancient Time Capsules Nintoku-tenno-ryo Kofun and Mozu Kofungun"

