

EST. 1994

City Life

ISSUE 190

October/November 2025 Edition

City Life is a free English newsletter published every even-number month by the International Division at the Sakai City Government to provide information to the residents of Sakai City. It is available at libraries, ward offices and other city facilities, or you can view it online at the Sakai City Government English website. Don't forget to also sign up for emails to know when each new edition is published! Scan the QR code for more information. If you have any questions or feedback, or would like the paper version sent to you (free for foreign residents who live, work or study in Sakai), please contact Lena at the following email address: kokusai@city.sakai.lg.jp



Legend: ☆Events ◆Exhibitions ※Important Notices ▲Campaigns ●Child & Healthcare ❁Environment ☎Help Lines

☆52nd Sakai Festival October 18th (Sat) & 19th (Sun)

From Sakaihigashi station to Sakai station spanning around 1km, including Uchikawa River and a part of Daidosuji Street, the area will be completely transformed into a festival zone. There will of course be the majestic 'Gun squad demonstration', the 'Carrying of Futon daiko', as well as fun stage events, food stalls, food trucks, and tea ceremony experiences. This is a participatory street festival where you can enjoy the charm of Sakai, including its history, traditional culture, and modern industries. Last year, the event attracted approximately 400,000 visitors in total. Let's look forward to enjoying it again this year! Scan the QR code to access the official website (Japanese only). (There is a possibility of a change in schedule. Cancellation in case of storm, go ahead rain or shine.)



1 – Mina Sakai Zone & Stage

Saturday 18th 16:00-21:00 (pre-event)

Sunday 19th 11:00-17:00

Mina Sakai (Citizens Plaza)

Stage events (Until 18:00 on 18th), food stalls

※Only on 18th: Futon daiko carrying competition (street in front of the city hall from 18:30-20:30)

Date/time: 2 ~ 8 are on Sunday 19th from 11:00-16:00

2 – Citizen Power Street & Stage

Near Yuya Elementary School

There will be an opening ceremony, dynamic citizen performances, sports experiences, and Sakai Cycle City PR booth

3 – Traditional Culture & International Exchange Street

West side of Yuya Elementary School ~ West side of the Sankei Shimbun Sakai Branch

Tea ceremony experience, traditional industry workshops, ASEAN country booths, local specialty exhibits and sale booths

4 – Gun Squad Stage

West side of the Sankei Shimbun Sakai Branch

~ Ichinocho-higashi intersection

Gun squad firing performance!

5 – Futon Daiko Street

Ichinocho-higashi intersection ~ Oshoji intersection

There will be magnificent and dynamic Futon daiko performances

6 – Family Street & Stage

Kyoto Bank Sakai Branch ~ Ichi Elementary School

Exhibition of police cars, fire engines and construction vehicles, and stage performances by children

7 – Senshu Gourmet Circus

Sakai Ebisujima Dock (Uchikawa Riverside)

Enjoy Senshu gourmet booths and a cruise experience

8 – Daidosuji Café Terrace (pedestrian zone)

Oshoji Station ~ Shukuin Station (Hankai line)

Gathering of food stalls and food trucks

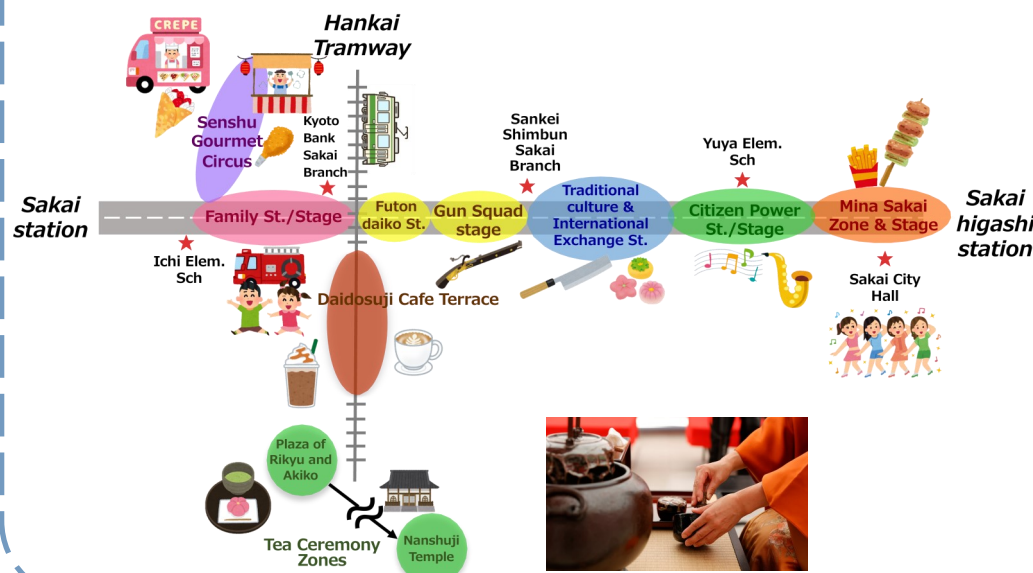
9 – Hometown of Rikyu Tea Ceremony Zones

Nanshuji Temple: Saturday 18th 9:00-15:40 (accepting people until 14:50)

Authentic tea ceremony by 3 major tea schools

Sakai Plaza of Rikyu and Akiko: Saturday 18th & Sunday 19th 10:00-17:00 (accepting people until 16:30)

Matcha tea service by students etc.
*Please note tickets may sell out



Detailed information on opening hours, admission costs, access etc. of Harvest Hill, Sakai City Museum, Mihara History Museum, Sophia Sakai, Fenice Sacay, Alphonse Mucha Museum and Sakai Plaza of Rikyu and Akiko can be found on the Sakai City Government English website.

Museums &
Facilities



Events



※Relocation of Kindai University Faculty of Medicine and Hospital



In November, the Kindai University Faculty of Medicine and Kindai University Hospital will relocate from Osakasayama City to a new site in front of Izumigaoka station, opening as the Osaka Medical Campus. This move is expected to enhance the overall quality of healthcare in the region and bring new vitality to the local community by establishing a central hub for medical education. Scan the QR code for the website for the relocation of Kindai University Hospital (Japanese only).

☆Made in Sakai Fair 2025

Come see the "skill" and "masterpieces" of Sakai convene at this event with booths filled with local Sakai products, sweets and traditional crafts!

Date/time: November 8th (Sat) & 9th (Sun) 10:00-16:00

Place: Sakai City Industrial Promotion Center, Event Hall and

others
Booths:

- Sakai goods market
- Sakai sweets festival
- Freshly harvested Sakai vegetable market
- Knife-sharpening
- Hand-crafting experience
- Fire engines and police cars exhibition



☆Czech Festival 2025 in Kansai

An annual tradition and a very popular event. Enjoy 3 days of Czech culture, such as Czech cuisine, beer & wine, Czech music, and folk performances!

Date/time:

October 24th (Fri) 16:00-21:00

October 25th (Sat) 11:00-20:00

October 26th (Sun) 11:00-19:00

Place: Mina Sakai (Citizens Plaza)

Admission: Free

☆ONE COIN Jazz Piano CONCERT "Autumn"

Jazz arrangements of folk songs and children's songs themed around 'autumn' in Japan and from around the world will be presented.

Date: October 19th (Sun)

Venue: Sakai City Mihara Cultural Hall, Artebell

Pianist: Takenaka Makoto

Tickets: Advance tickets - 500 yen (700 yen on the day of the event). Now on sale at the venue box office, e+ (eplus), Lawson Ticket, and CN Playguide.

Capacity: 536 persons (preschool children are kindly requested not to attend)

☆English Tour at Old Gunsmith Workshop and Residence



A specialist staff member will provide an English explanation of the Old Gunsmith Workshop and Residence and the special exhibition 'The Architecture of the Gunsmith Residence — Secrets Above and Below Ground.'

Date/time: October 11th (Sat), November 14th (Fri) 11:00~, 14:00~ (10 people capacity per 1 hour session)

Free (separate admission fee required), advance registration necessary (same-day participation possible if space is available)

Application method: Please send (1) your name and (2) the number of participants by email to info@sakai-machiyamuseums.com. Scan the QR code for more information.

☆Futon Daiko and Danjiri Festivals



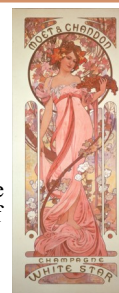
Both are traditional autumn festivals of Sakai. The Futon daiko features a large portable shrine adorned with stacked red futons, carried through the streets by many participants. On the other hand, the Danjiri parade showcases elaborately carved wooden floats pulled through town by large groups of people. Both Futon daiko and Danjiri festivals are held in various locations throughout October. For more information scan the QR code to visit the Sakai Hyakucho website (English).

◆Sakai Alphonse Mucha Museum

Special Exhibition: "Mucha and Yumeji – STYLE of BEAUTY"

Overview: This exhibition features Alphonse Mucha (1860–1939), a leading artist of Art Nouveau, and Takehisa Yumeji (1884–1934), who embodied the romantic spirit of Japan's Taisho era. Focusing on their iconic portrayals of women, the exhibition explores and compares their unique expressions of beauty. Enjoy this unprecedented collaboration made possible by special contributions from the Yumeji Art Museum.

Date: Until November 30th (Sun)



◆ASEAN Photo Contest Exhibition

Date/time: October 21st (Tue) ~ November 3rd (Mon, public holiday), 9:00-21:00

Location: Sakai City Hall, high rise building, 1F north lobby

Admission: Free

Around 50 picks, including the winning entries, from this year's ASEAN Photo Contest will be displayed. Come enjoy the aesthetics of Southeast Asian countries taken by both amateurs and professionals!



※National Census

Currently, the national census is underway. The national census is the most important statistical survey conducted by the Japanese government every five years, based on the Statistics Act. The data collected is used as fundamental information for national, prefectural, and municipal administration. All people residing in Japan, regardless of nationality, are required to participate. Survey materials are available in 28 languages. Among them, responses can be submitted online in English, Chinese, Korean, Portuguese, Spanish, and Vietnamese. If you need materials in other languages,

please contact the census enumerator or the Multicultural Exchange Plaza Sakai. The information collected in this survey will never be used for any purpose other than statistical analysis. Starting September 20th, census enumerators have been distributing survey materials to mailboxes etc.

- Online responses: Accepted until October 8th
- Mail-in paper forms: Please send them between October 1st and October 8th

Scan the QR code to visit the website.

国勢調査 2025



☆Exhibition, Sale, and Live Demonstration of Sakai Handwoven Dantsu Carpets

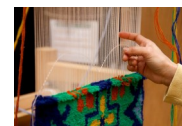
The traditional techniques of Sakai handwoven dantsu carpets are still carefully preserved today. Visitors can witness the intricate and beautiful designs and textures unique to handweaving, along with the craftsmanship that brings them to life. Free admission, canceled in case of severe weather.

Date/time:

Exhibition & sale - October 7th (Tue) ~ October 13th (Mon), 10:00-18:00

Live Demonstration - October 11th (Sat), 13:00-16:00

Venue: Sakai Traditional Crafts Museum, 2F TAKUMI EXHIBITION



☆Otohome's Holiday Festival in Old Sakai Port 2025

Why not spend the evening feeling the sea breeze at the waterfront, just a short walk from Nankai line Sakai station? You can enjoy all kinds of gourmet foods, workshops that children can join, music by artists. Free (food stalls and workshops are fee-charged). Canceled in case of stormy weather.

Date/time: October 4th (Sat) 12:00-19:00, 5th (Sun) 11:00-18:00

Venue: Old Sakai Port (around 3 Ohama Kitamachi, Sakai-ku)

Closest station: Nankai line Sakai station, west or south exit

Scan the QR code for details (Japanese only)



▲Orange & Purple Ribbon Campaign



Stop! Child abuse and violence against women. November is Child Abuse Prevention Awareness Month (orange ribbon symbol) and November 12th ~ 25th marks the End Violence



Against Women Campaign (purple ribbon international symbol). Scan the QR code for more details.

※Sakai City Scholarship Application FY2025 (University Students etc.)

Sakai City will grant a scholarship of 120,000 yen per year to those who have difficulty in attending university etc. due to financial hardship. Through a screening, we will prioritize students with higher grades. (Quota: 120 people). Eligibility is based on those who meet all the conditions below:

- Students who are consecutively receiving the grant-type scholarship from Japan Student Services Organization (JASSO) (from 1st to 3rd division) from the April to September portions FY2025.
- The student in question or their primary income earner must have lived in the city for a continuous period from April 30th, 2025 to the date of application.
- From a 5 level, 0-4 scale, grades are an average of 3.0 or higher. 1st year university students will be judged on their first to last year of high school grades, second year and above university students will be judged on their 1st year university grades up until the date of application.

Application period: October 1st ~ 31st

Please mail the application form, documents that show your grades and that you are continuously receiving JASSO's grant-type scholarship (from 1st to 3rd division) from the April to September portions of FY2025. If the documents that show your grades are sealed, submit without opening it. If it is not sealed, you can upload and submit the documents via the Sakai City e-application system. You will be given notice via mail around the end of January about the screening result.

●Pink Ribbon Awareness Month: October

October is Pink Ribbon Month.

The pink ribbon is the symbol for emphasising the importance for women to detect and treat breast cancer in its early stages. It is said that 1 in 9 women in Japan develop breast cancer. It's recommended to regularly do self-checks and start going for examinations once you reach 40 years old. Sakai City offers a breast cancer examination (mammography) to women during their even-age year after turning 40 years old. Sakai City cancer examinations will continue to be free this FY2025, too. Scan the QR code to find medical institutions near you (Japanese only).



☆Mihara History Museum Kansai Culture Day

In celebration of 'Kansai Culture Day,' which offers free admission to the exhibition rooms, events will be held including a Ryurei-style tea ceremony (with traditional sweets, 500 yen, limited to 50 participants) and the 'Mihara Morning Market - Autumn Harvest Festival,' featuring direct sales of freshly harvested wild rice grown in Mihara and fresh vegetables. No registration required. Canceled in case of severe weather.

Date/time: November 16th (Sun), 10:00-15:00



☆Let's play together!

The Human Rights and Friendship Center opens its sports area as a play and social space for children, specifically elementary and junior high school students. Participation is free of charge.

Please register at the 1F reception desk on the day of the event.
Open days/time: 1st and 3rd Wednesdays, 15:00-17:00
Scan the QR code to visit the website (Japanese only)



● Childcare Service Application

Application for childcare services for next fiscal year (April 2026 onward) will be accepted until **17:30 on October 17th** at the Child-raising Support Division (子育て支援課) at each ward office (closed weekends and public holidays). Online applications are open until **23:59 on October 17th**. Information on usage and application are available at the Child-raising Support Division at each ward office. To use the childcare service, it is necessary for the guardian (s) to have met certain conditions regarding employment, pregnancy, nursing care, around the time of childbirth, illness/disease or disabilities.



● Applications Open for Enrollment in Afterschool Care from April 2026

Application forms can be submitted via the Sakai City e-application system from **November 4th 0:00 until November 28th, 23:59**. You can also submit the form directly to the After-School Children Support Division or mail it (must arrive by deadline), from **November 4th ~ 28th (9:00-17:30, excluding weekends and public holidays)**. The user guide including forms will be available from October 24th until November 28th at Nobinobi Rooms, Sakaikko Clubs and Hokago Rooms, as well as the City Hall Administrative Information Centre and Ward Office Administrative Information Corners.



☆Sakai City Museum

Night Museum

The special exhibition "Sakai's Bamboo Craft Masters — Maeda Chikubosai and Tanabe Chikuunsai," currently being held at the Sakai City Museum, and the exhibition "Tanabe Chikuunsai IV" at the Sakai City Tea House "Shin'an" (until November 3rd), will have extended viewing hours during the following period:

Date/time: October 3rd (Fri) ~ 5th (Sun), until 21:00 (last admission 20:30)

Admission: General 1,000 yen, high school & university students 500 yen, elementary & junior high school students 250 yen. This ticket grants access to both exhibitions at the tea house and museum, including the permanent exhibition.



Notice of long-term closure

The Sakai City Museum will be closed from November 4th, 2025 to March 31st, 2026, due to renovations of the air conditioning system. However, the Sakai City Tea House "Shin'an" will remain open as usual during this period.



※Health Insurance Deadline for October and November

If you do not make payments from pension, the deadline for national health insurance payments (June through to March 2026) is the **last day of every month**, aside from December which is the 25th. The deadline for elderly person health

insurance payments is the **last day of every month** between July and March 2026 (automatic withdrawal December 28th). If the due date falls on a bank holiday, it will be the next business day. Please make sure to pay by the due dates below:

October: October 31st

November: December 1st

※Traffic fines will be introduced for bicycle violations

Starting in April 2026, Japan will introduce a new blue ticket system for over 100 types of bicycle traffic violations, including ignoring traffic signals and using smartphones while riding. This system allows violators to avoid criminal penalties by paying a fine. The applicable age is 16 and older, and the penalty amount will be equivalent to that for violations involving

motorized bicycles (mopeds). Please follow bicycle traffic rules carefully to avoid causing or being involved in accidents.

Main Bicycle Violations and Fines:

- Using a smartphone while riding: 12,000 yen
- Failure to stop at a stop sign: 5,000 yen
- Riding on the right side of the road: 6,000 yen
- Ignoring traffic signals: 6,000 yen



The Plaza of Multicultural Exchange Sakai (POME Sakai) can help you with language assistance for any of the processes in the city notices listed here. Check the back page for all their contact information!

☎ Plaza of Multicultural Exchange Sakai

TEL: 072-228-7499

Email: kokusai@city.sakai.lg.jp

Address: 2-1 Minamikawara-machi, Sakai-ku (5F Sakai City General Welfare Hall).

Opening Hours: Sunday to Friday 9:00-17:30
(closed on public holidays and New Year's break 29 December to 3 January).

General Consultations for Foreign Residents

Please drop by in person or call during these hours if you have any queries regarding daily life.

Mon to Fri 10:00-12:00 & 13:00-16:00.

Japanese, English, Chinese, Korean, Vietnamese, Portuguese, Spanish, and Thai.

***Tagalog, Indonesian and Nepali is only available for in person consultations.**

*Languages other than Japanese/English will be conducted through a 3-way call or through the use of translation devices and interpreting services.

Free Confidential Consultation

October 15th & November 19th, 14:00-17:00.

Consultations on naturalizations and immigrations with an administrative procedure specialists are available for discussing the status of or changes to applications. **Three slots available** (Reservations required). Those that require an interpreter must apply at least 10



days before the date of the consultation.

Free Online Consultation for Foreign Residents

The Plaza of Multicultural Exchange Sakai are offering free online consultations using Zoom for foreign residents living, working or studying in Sakai City, in 13 languages. Get advice from immigration and law experts. Please make an appointment by phone or e-mail one week in advance of your consultation day.

Administration: Not available

Labour: November 7th 13:30-16:30

Immigration: November 14th 13:30-16:30

Daily Life: November 21st 13:30-16:30

Law: November 28th 18:00-20:00

Volunteer Interpreter Service

Those who need interpretation can apply for a volunteer interpreter using the form available for download from the QR code. Please make sure to hand it in via post, fax or email **at least 10 days in advance.**



やさしい日本語 Facebook Page

POME Sakai has started a Facebook page which posts about emergencies, disaster warnings, upcoming events, etc., in Easy Japanese. This is a great resource for those who want to attain information in Japanese.



☎ “Suirin すいりん” App for Waterworks

Download the official Sakai City Waterworks and Sewage Bureau app for these convenient features!

- Get notices about checkups and view up to 2 years of past water usage and bills.
- Get digital bills delivered through the app and pay using PayPay or at a convenience store.
- Get confirmations of automatic withdrawal payments.
- Apply for temporary stop and start of water services.
- Pay bills with your credit card (registration required).

For more details and to download the app, scan the QR codes (Japanese only).

For Android users



For iPhone users



Waterworks and Sewage Bureau Web-site



• No smoking or littering on the street

The area in front of Sakaihigashi station and the public road on the south side, the squares in front of Sakai station (west and east), Oshoji street, and the area around the city hall are designated as non-smoking and no littering zones. Violations will result in a fine of 1,000 yen. Additionally, Sakaihigashi station's west side, Nakamozu station, Mikunigaoka station, Sakai-shi station, Komyoike station and Fukai station are designated as priority areas for improving smoking and littering manners. We appreciate your cooperation.



※Parking Ban-Zones for Bicycles & Minibikes

Abandoned bicycles (including minibikes) obstruct the safe passage of pedestrians and the entry of emergency vehicles. The areas around 27 stations in Sakai City (within approximately 300 meters of railway stations, excluding the Hankai line) are designated as a parking ban zone for bicycles. Bicycles and minibikes left in the zone will be removed, and a removal and storage fee will be required for their return. Please park your bicycles and minibikes in designated parking areas.



※Emergency Numbers

110: Police

119: Fire or medical emergency (available in English, Chinese, Korean, Spanish, Portuguese and Vietnamese).

When you call 119, the operator can set up a three or four-way call with an interpreter/s. It can take up to 10 seconds to connect, during which the caller should wait on the line and not hang up.

For sudden injuries or illnesses, there is a national 'Ambulance Use Guide'.

It is available in multiple languages, so scan the QR code to access it.



※Storing Water and Toilets in Case of Disaster

It is said that a person needs about 3 liters of water per day. Immediately after a major disaster, water supply will be cut off. Prepare three days' worth of drinking water to be ready for a disaster.

From the fourth day after a disaster occurs, you will be able to receive water at evacuation centers. Prepare portable toilets for times when your home toilet cannot be used.



☎ Sakai City CIR Social Media

This is run by yours truly! I mainly post information on what's happening in Sakai, from upcoming events to emergencies & disaster warnings. It's operated completely in English.



※Tax Payment

October will be the third appointed time for the City and Prefectural Resident Tax and Forest Environment Tax. The deadline is **October 31st**. Please pay at the nearest banking facility, convenience store etc. Payment can also be made using Pay-easy, mobile payment methods and credit cards on the regional tax payment website (eLTAX). Scan the QR code for the English user's guide on the website (eLTAX). For those that use account transfer, the payment will automatically be deducted on **October 31st**, so please check that you have sufficient funds.



Kōyō - "Autumn leaves" Momiji - "Maple"