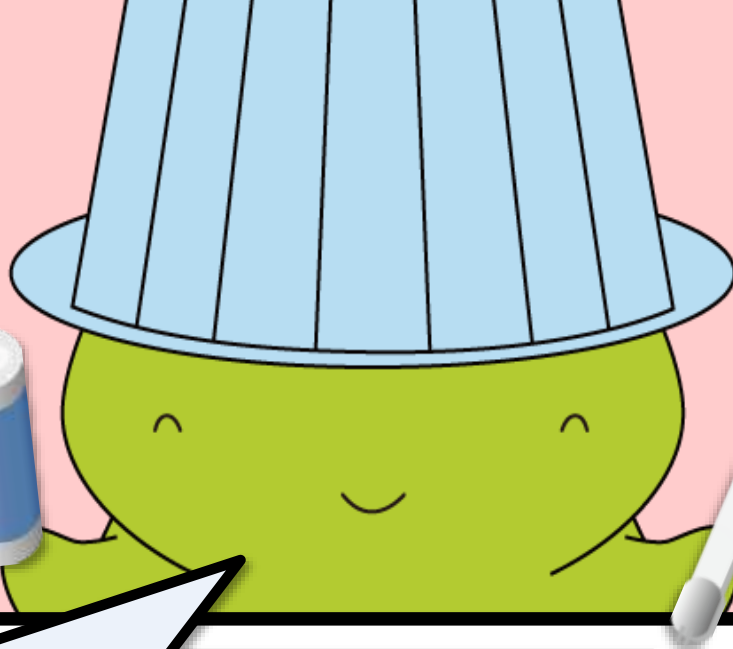


Quick Guide

Keep this together with your
Recycling and Garbage
Disposal Handbook.



Meet Mooyan, the Sakai City
environment mascot.

From November 1, 2017

New Rules for Garbage Collection

Fluorescent tube lights and dry cell batteries, etc., must be brought to an official recycling box.

- Sakai City will collect household waste items containing mercury (e.g., fluorescent tube lights, dry cell batteries, and thermometers) only at specific pick-up points.
- From November 1, 2017, onwards, please bring these items to either of the following locations.
 - ▶ Recycling boxes installed in municipal facilities and cooperating supermarkets citywide
 - ▶ Cooperating electronics and hardware stores citywide



Old method: These items were classified as “non-burnable small garbage,” and you would call the city’s Large Garbage Reception Center for pickup

From November 1, 2017

New method: Bring the items to a recycling box or a cooperating store



Items containing mercury will no longer be collected as “non-burnable small garbage.”

(Cut-off for collection requests: October 31)

These items cannot be brought directly to treatment plants.

■ Acceptable items

The following household waste items must be brought to an official recycling box.



Fluorescent tube lights
(excl. LED and halogen lights)



Dry cell and button cell batteries
(excl. rechargeable batteries)



Thermometers and blood pressure gauges containing mercury

Unacceptable items

- **LED and halogen lights**

⇒ These are “non-burnable small garbage.” Please call the city’s Large Garbage Reception Center for pickup.

- **Rechargeable batteries (small)**

⇒ Sakai City cannot collect these.

Please take them to the Small Rechargeable Battery Recycling Box at a home appliance store.

- **Rechargeable batteries (large, e.g., car batteries)**

⇒ Sakai City cannot collect these. Please consult the manufacturer or retailer.

- **Electronic thermometers and blood pressure gauges**

⇒ Please bring them to a Used Small Home Appliance Recycling Box or call the city’s Large Garbage Reception Center for pickup (classification: non-burnable small garbage).

- **Alcohol-based thermometers**

⇒ These are “non-burnable small garbage.” Please call the Large Garbage Reception Center for pickup.

Button cell batteries can also be dropped off in the Button Cell Battery Recycling Bins at home appliance stores.

***NB: Waste items from businesses or stores will not be accepted.**

Why is mercury being treated separately?

Mercury is used in a number of areas throughout our daily lives, but it is a hazardous substance that can damage your health and pollute the environment.

In October 2013, amid global recognition of the need to reduce mercury released into the environment, the Minamata Convention on Mercury was adopted and signed at the United Nations as a means of minimizing the release of mercury and preventing mercury pollution worldwide.

In response, Japan promulgated the Act on the Prevention of Environmental Contamination by Mercury and the revised Air Pollution Control Act in June 2015.

Sakai City is launching this new system because the proper collection and treatment of unused household items containing mercury is necessary to help minimize the release of mercury into the environment.

■ How to drop off waste items

Acceptable items can be dropped off at recycling boxes and cooperating stores for free.

● Recycling box locations

Drop the pertinent items off at a recycling box. These are installed in municipal facilities and cooperating supermarkets citywide.



Recycling boxes look like this

Remember: These aren't classed as "non-burnable small garbage" anymore, so the city won't collect them from your house.



● Cooperating stores

Bring the pertinent items to any of the cooperating stores citywide, and the store will accept them.

*NB: Stores will accept the items regardless of when they were replaced.



Preparing for disposal



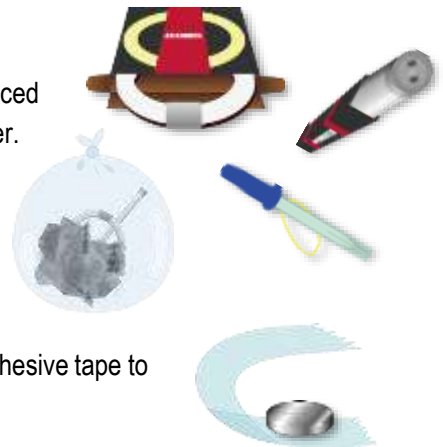
Do not deliberately crush glass items. Fragile items should be placed in their original packages, a plastic bag, or other suitable container.



Broken items should be wrapped in newspaper and placed in a plastic bag, and the plastic bag should be tied airtight.



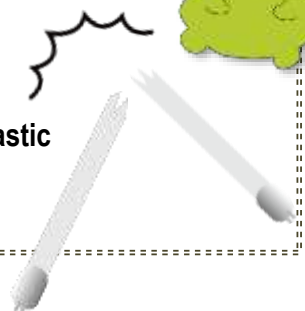
Cover both terminals of button cell batteries with, for example, adhesive tape to prevent direct contact with other button cell batteries.



If you break a fluorescent tube light or mercury-based thermometer at home

- Open windows or doors to ventilate the space.
- Avoid cleaning up with a vacuum cleaner, as this spreads the mercury.
- Never wash the mercury down your sink or toilet as this contaminates pipes, septic tanks, and treatment facilities.
- Never touch mercury directly. Always wear rubber gloves.
- Put the mercury and pieces of glass you recover into a glass container or plastic bag and seal it airtight.

Be careful!



Recycling box and cooperating store locations

Be sure to bring your waste items to these facilities during business hours.

Recycling box locations

Ward	Name	Address	Items accepted		
			Fluorescent tube lights	Dry cell batteries	Mercury-based thermometers, etc.
Sakai	Izumiya, Hanwa Sakai Branch	1-1-100 Tadei-cho	○	○	○
	Life, Sakai Elkimae Branch	2-62-7 Ebisujima-cho		○	
	Life, Daisen Branch	6-184-1 Daisen Nishi-machi		○	
	Sakai City Hall	3-1 Minamikawara-machi	○	○	○
Naka	Izumiya, Senboku Branch	270 Kosaka	○	○	○
	Naka Ward Office	2470-7 Fukaisawa-machi	○	○	○
Higashi	Sunplaza, Kitanoda Branch	1084-132 Kitanoda	○	○	○
	Life, Kitanoda Branch	15-1 Kitanoda		○	
	Higashi Ward Office	195-1 Hikisho Haradera-machi	○	○	○
Nishi	Ito Yokado, Tsukuno	20-1 Shimoda-cho	○	○	○
	Life, Fukuizumi Branch	444-1 Kami		○	
	Nishi Ward Office	6-600 Otori Higashi-machi	○	○	○
Minami	Sunplaza, Komyoike Branch	2-1-7 Shinhino'odai	○	○	○
	Panjo	1-3-1 Chayamadai	○	○	○
	Minami Ward Office	1-1-1 Momoyamadai	○	○	○
Kita	Life, Mozu Branch	2-91-1 Mozuakahata-cho		○	
	Rainbow Kanaoka	1-7-15 Kuramae-cho	○	○	○
	Kita Ward Office	5-1-4 Shinkanaoka-cho	○	○	○
Mihara	Sunplaza, Satsukino Branch	1-5-1 Satsukino Higashi	○	○	○
	Sunplaza, Mihara Amabe Branch	40-33 Kitaamabe	○	○	○
	Mihara Ward Office	167-1 Kuroyama	○	○	○

Cooperating stores

Ward	Name	Address	Items accepted			
			Fluorescent tube lights	Dry cell batteries	Mercury-based thermometers, etc.	
Sakai	Asano Denkiten, Y.K.	2-1-14 Zaimoku-cho Higashi	○	○		
	Uono, K.K.	4-2-8 Shinzaike-cho Nishi	○	○		
	Okita Denki, K.K.	1-1-21 Minamihan-cho Higashi	○	○		
	Kinoshita Denki Shokai	1-1 Takasago-cho	○	○		
	Kojima Denki Shokai	3-1-16 Kushiya-cho Higashi	○	○		
	Koyama Denki Shokai, K.K.	2-4 Shin-machi	○	○		
	Sakaguchi Denki Shokai	2-6-1 Ohama Naka-machi	○	○		
	Sakon Denki	3-3-1 Midorigaoka Kita-machi	○	○		
	Fureai Shop Sawada	2-1-14 Asahigaoka Minami-machi	○	○		
	Masuda Denki Shokai, Y.K.	11-4 Ichijo-dori	○	○		
	Yamabuki Denki Shokai, K.K.	5-7-11 Enokimoto-machi	○	○		
	Home Center Kohnan, Sakai Branch	90-3 Ishizu Kita-machi	○	○	○	
	Naka	She's Ashiyama, Y.K.	2-6-27 Fukasaka	○	○	
		She's Morishita, Y.K.	580-42 Tazono	○	○	
Tani Denka Chain, Fukuda Branch		543-1 Fukuda	○	○		
Teshima Denki Shokai		3482 Fukai Kita-machi	○	○		
Muraoka Denki		2-5-19 Handa Nishi-machi	○	○		
Home Center Kohnan, Onoshiba Branch		141 Onoshiba-cho	○	○	○	
Higashi	Hytanya, Hatsushita Branch	19-16 Hikisho Kita-machi	○	○		
	Life Net Shirasagi	1-21-5 Shirasagi-cho	○	○		
Nishi	Kishida Denka House	181-7 Hiraoka-cho	○	○		
	Sera Denki, Y.K.	1-2-2 Uenoshiba Mukogaoka-cho	○	○		
	Hamadera A. I. Denki	5-612 Hamadera Showa-cho	○	○		
	Hannan Denka Store	2-218-6 Hamadera Suwanomori-cho Naka		○		
	PICK UP YAGI	7-749 Otori Higashi-machi	○	○		
	Hirano Musen Denki Shokai, K.K.	2-158 Hamadera Suwanomori-cho Naka	○	○		
	Hirota Sangyo, K.K.	4-7-5 Hamadera Ishizu-cho Naka	○	○		
	Marushin Denki, Otori Branch	1-70-13 Otori Nishi-machi	○	○		
	Yagi Denki	1-27-17 Hojo-cho	○	○		
	Home Center Kohnan, Daini Hanwa Otori Branch	3-6-2 Hamadera Minami-machi	○	○	○	
Minami	Denki no Life Net Senboku	4-53-2 Shinhino'odai	○	○		
	Yoshida Denki	2-6-15 Takakuradai	○	○		
	Home Center Kohnan, Senboku Branch	157 Iwamuro	○	○	○	
	Home Center Kohnan, Senboku Nigo Kodai Branch	74 Kodai	○	○	○	
Kita	Okada Denki	5-4-113 Shinkanaoka-cho	○	○		
	Kishimoto Denki Shokai	1638 Minami Hanada-cho	○	○		
	Sakai Denka Store, Mamezuka Branch	2-75 Mamezuka-cho	○	○		
	Hirano Service	5-4-29 Higashi Mikunigaoka-cho	○	○		
	Yoshihisa Denki Shokai	1-2-6 Mamezuka-cho	○	○		
	Home Center Kohnan, Kanaoka Kuramae Branch	258-2 Minami Hanada-cho	○	○	○	
Home Center Kohnan, Sakai Mikunigaoka Branch	1-25-1 Mozu Umekita-cho	○	○	○		
Home Center Kohnan, Nakamozu Branch	3-428-2 Nakamozu-cho	○	○	○		

Look for these stickers—they signify a recycling box or cooperating store ♪



Recycling box locations and cooperating stores are subject to change. See the Sakai City website for up-to-date information. http://www.city.sakai.lg.jp/kurashi/gomi/gomi_recy/bunbetsu/shigen/suigin.html