

Sakai City Junior High School Lunch Program



Meatball Stew



Tandoori Chicken with Potatoes



Keema Curry

●Contact Information●

**Sakai City Junior High School
Lunch Program Call Center**

Futureinn Co., Ltd.

TEL: 052-732-8948, FAX: 052-732-8077
(In Japanese only)

- How to reserve school lunch meals
- Reservation confirmation and school lunch account balance inquiry
- ID and password

**Sakai City
Board of Education Secretariat**

Health and School Lunch Division

Tel: 072-228-7489, Fax: 072-228-7256
(In Japanese only)

- Inquiries about school lunch menus and other information about school lunch meals

Hours: 9 am-5:30 pm, Monday-Friday (excl. public holidays and December 29-January 3)

December 2018

Sakai City Board of Education

Sakai City Junior High School Lunch Program

- Enrollment in the Sakai City Junior High School Lunch Program is optional. A monthly reservation is required to access school lunch service.
- School lunch is cooked at kitchens of private meal providers, packed in lunch boxes and delivered to each school.
- School lunch menus are planned by junior high school nutrition educators and municipal nutritionists.
- A school lunch meal consists of a staple diet of rice/bread, three to four side dishes and milk.
- Rice/bread is available in three portion sizes—small, regular and large.
- Hot food is kept warm in a cart and served warm.
- Students can order a Lunch Support Mini meal (250 yen) on the day when they cannot bring a lunch from home (no advance reservation required). Further information is available at the website of the Sakai City Board of Education. (In Japanese only)



Warming cart

School Lunch Meal Menus

- School lunch fees, which cover only the costs of purchasing ingredients, must be paid by a parent/guardian of each student. The fees vary with the portion size of rice/bread as shown below.
- A school lunch meal is priced at 300 yen for a small portion size (小盛), 310 yen for a regular portion size (標準) and 330 yen for a large portion size (大盛). (The above prices are subject to change due to socioeconomic conditions.)

Staple diet (rice/bread): Available in small (小盛), regular (標準) and large (大盛) portion sizes.

Milk (200 ml): Rich in good quality protein and calcium.

Side dishes: Two hot dishes and two chilled dishes/soup in a mug



Example of a meal with bread:

- Tandoori Chicken with Potatoes
- Cabbage and Tuna Spaghetti
- Onion Soup



Example of a student's favorite meal:

- Keema Curry
- Squid Fritter
- Japanese Mustard Spinach Salad
- Fruit Compote



Students are requested to bring their own chopsticks and spoon from home every day.



Recommended Dietary Allowance for School Lunch for Junior High School Students

Calories (Kcal)	Protein (%)	Fat (%)	Salt equivalent (g)	Calcium (mg)	Magnesium (mg)	Iron (mg)	Vitamins				Dietary fiber (g)
							A (μgRE)	B1 (mg)	B2 (mg)	C (mg)	
830	13-20% of energy intake	20-30% of energy intake	<2.5	450	120	4.0	300	0.5	0.6	30	≥6.5

* The daily energy intake from a school lunch meal with a regular portion size of rice/bread is about 830 kcal.

Food Allergies

- Please note that ingredients cannot be omitted or substituted for food-allergic students. Parents/guardians are asked to check food allergy information provided in school meal calendars and from other sources before making reservation decisions.
- Information about ingredients included in meals that may cause food allergies is available on the lunch menu screen of the Sakai City School Lunch Reservation System. The same information is available at the website of the Sakai City Board of Education. (In Japanese only)
- Students who cannot drink milk due to milk allergy, lactose intolerance or any other medical reason are required to submit a Request for Exclusion of Drinking Milk from School Lunch (堺市中学校給食飲用牛乳除去申出書) form. The price of milk will be deducted from the school lunch meal fee.

Providing School Lunch Meals in a Safe and Hygienic Manner

Menu Planning

Menu Planning Meeting

- School lunch menus are planned by junior high school nutrition educators and nutritionists from the Health and School Lunch Division.
- From a variety of ingredients and cooking methods, appropriate combinations are chosen to prepare each meal.
- Meals are prepared with the freshest seasonal ingredients whenever possible. Japanese dishes, including those for special occasions and local specialty dishes from various Japanese regions are served. Dishes from around the world, of which recipes are modified for school lunch meals, are also served.
- School lunch meals are lightly seasoned. Dashi broths for Japanese dishes are made mainly from shaved fish flakes and kombu kelp.



Menu Plan Review Committee Meeting

Menu Plan Review Committee Meeting

- School officials and parent/guardian representatives discuss and review menu plans at a Menu Plan Review Committee Meeting.

Purchase of Ingredients

- School officials, parent/guardian representatives and staff members from a local public health center select safe ingredients that are free of unwanted food additives and harmful substances for school lunch meals at an Ingredients Selection Committee Meeting.
- All ingredients for school lunch meals are inspected in advance to check for E. coli O157, radioactive material and other hazardous substances.
- Ingredients are delivered to private meal providers' kitchens by specialized types of vans for food delivery (freezer/refrigerated/insulated vans).



Ingredients Selection Committee Meeting

Preparation

- All ingredients are cooked to prevent food poisoning.
- Food is prepared and cooked in a safe and hygienic manner in accordance with the National School Lunch Meal Hygiene Management Standards and the Sakai City Junior High School Lunch Meal Hygiene Management Manual.



Serving

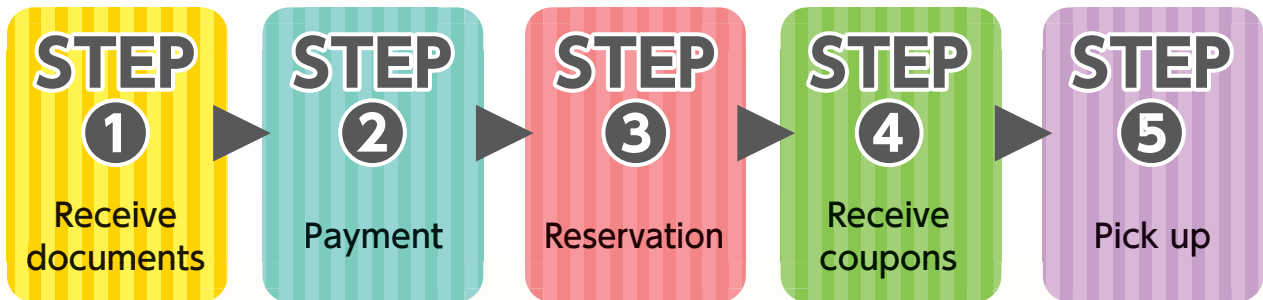
- A lunch meal is tasted beforehand by service staff to secure quality and safety of the meal.
- At the start of lunch, students pick up lunch meals from service staff in a serving room.



STEP
1
Receive documents

STEP
2
Payment

Steps to Using the School Lunch Service



You will receive a Reservation System Login Notice (予約システムログイン通知書), payment slip (払込取扱票), etc.

By credit card online or in cash at a convenience store using a payment slip (払込取扱票).

Three ways to reserve — “Auto-Renewing Reservation (ずっと予約)”, “Monthly Reservation (Web) (毎月予約 (web))” and “Monthly Reservation (Mark Sensing Card) (毎月予約 (マークシート))”.

After your reservation is accepted, you will receive meal coupons from your child's school.

Your child can pick up a school lunch meal in exchange for a meal coupon at lunchtime.

STEP 1 Receive documents

● The Sakai City Board of Education provides you with the following items that are required to access the Sakai City School Lunch Reservation System (堺市中学校給食予約システム) through your child's school.

- 1 Reservation System Login Notice (予約システムログイン通知書): It contains your user ID and password, which you will need to access the system to reserve school lunch meals.
* You can change your password in the Sakai City School Lunch Reservation System.
- 2 Payment slips (払込取扱票): Use this for payment through a convenience store.
- 3 Sakai City Junior High School Lunch Reservation Mark Sensing Cards (堺市中学校給食予約マークシート): Only necessary when making reservations by methods other than through your PC or smartphone.

* If your child cannot drink milk due to a milk allergy, lactose intolerance or other medical reasons, obtain a Request for Exclusion of Drinking Milk from School Lunch (堺市中学校給食用牛乳除去申出書) from your child's school and submit the completed form to the school.

STEP 2 Payment (Payment is required before reservation.)

You have the three payment options listed below.

- **Automatic credit card payment**
A monthly payment is automatically made.
- **Single credit card payment**
You need to pay for 20 or 90 meals at a time.
- **Cash payment at a convenience store using a payment slip**
You need to pay for 20 or 90 meals at a time.

Visa and Master Card are accepted.



To pay by credit card using your PC or smartphone, scan the QR code on the right and access the web page for the Sakai City School Lunch Reservation System. Alternatively, you can access the system from the website of the Sakai City Board of Education. (In Japanese only)

* The website's URL is also shown in the Reservation System Login Notice (予約システムログイン通知書).

PC & Smartphone



Automatic Credit Card Payment

★A credit card payment for school lunch meals for each month is automatically made.

- ① Enter the user ID and password provided in the Reservation System Login Notice (予約システムログイン通知書) to log in to the system.



- ② Click "Credit Card Payment Transaction (カード決済収納処理)" on the starting page for the School Lunch Reservation System.

Monthly Schedule

1st Payment for school lunch meals (6,600 yen + 66 yen [payment charge])

* When the remaining balance in the reservation system falls below 6,600 yen, your credit card payment is automatically processed.



- ③ Click "Click here to set up an Automatic Credit Card Payment (クレジット自動支払いはこちら)."

カードの有効性チェック

カードの有効性をチェックします。

カードの有効性チェック

クレジットカードの必要事項をご記入ください。

カード番号: [入力欄]
有効期限(M/YY): [01/19]

チェックする

カードの有効性チェック

カードの有効性が確認されました。下記の内容で登録します。よろしければ、「登録する」ボタンを押してください。

カード番号: *****1111
有効期限(M/YY): 01/19

登録する

クレジット自動支払い登録結果

クレジット自動支払いの登録は正常に完了しました。

[ホームへ戻る](#)



- ④ Read the terms of service (利用規約) and click "I Agree (同意します)." Your card information is registered in the system (a validity check is performed). This is the end of your registration.

From the month following the month of your credit card information registration, a credit card payment for school lunch meals is automatically made on the 1st of each month (excluding Saturdays, Sundays and public holidays) when the remaining balance falls below 6,600 yen.

Single Credit Card Payment

① Enter the user ID and password provided in the Reservation System Login Notice (予約システムログイン通知書) to log in to the system.



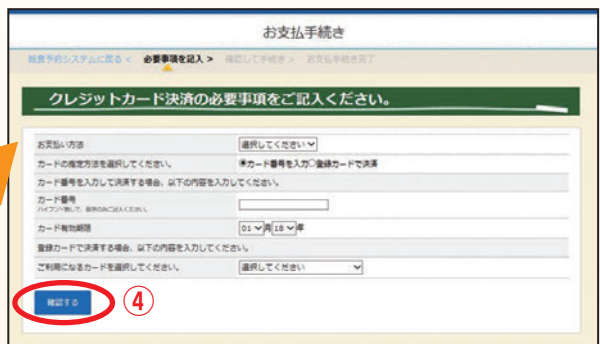
② Click “Credit Card Payment Transaction (カード決済収納処理)” on the starting page for the School Lunch Reservation System.



③ Choose your preferred option—6,666 yen or 29,997 yen. Click “Go to Payment Screen (決済画面へ),” confirm the service you have chosen, and click “Proceed (進む).”

Payment amount

For 20 meals: 6,666 yen
(6,600 yen + 66 yen [transaction fee])
For 90 meals: 29,997 yen
(29,700 yen + 297 yen [transaction fee])



④ Enter information about the credit card you will use for the payment, click “Confirm (確認する)” to confirm the entered payment information and then click “Pay (決済する).”

* Once your payment transaction is completed, a payment receipt notice appears on the screen. It may take up to an hour for the transaction result to be reflected in your school lunch account balance.

Cash Payment at a Convenience Store

- ① Use the payment slip (for 20 meals or 90 meals) that you have received from your child’s school.
- ② Pay in cash at a checkout counter of a convenience store.
- ③ Please note that you cannot make a reservation until 4 pm on the second day (excluding Saturday and Sunday) after the day of your payment.

Payment amount

For 20 meals: 6,735 yen
(6,600 yen + 135 yen [transaction fee])
For 90 meals: 29,835 yen
(29,700 yen + 135 yen [transaction fee])

《Important Information about Payment Slips》

- School lunch service users receive payment slips twice a year, in May and November.
- It takes at least two days (excluding Saturday and Sunday) for your payment to be reflected in the Sakai City School Lunch Reservation System (堺市中学校給食予約システム), which can then accept your reservation. Please note, therefore, you cannot make a reservation immediately after your payment.

STEP 3 Reservation

You have three options to make a reservation as listed below.

- Auto-Renewing Reservation (ずっと予約): A reservation is automatically made each month until your child leaves the school.
- Monthly Reservation (by PC, smartphone or mobile phone)
- Monthly Reservation (by mark sensing card)

To make a reservation using your PC, smartphone or mobile phone, please scan the relevant QR code on the right and access the web page for the Sakai City School Lunch Reservation System (堺市中学校給食予約システム). Alternatively, you can access the system from the website of the Sakai City Board of Education.

* The website's URL is also shown in the Reservation System Login Notice (予約システムログイン通知書).

PC
&
Smartphone



Mobile phone



Auto-Renewing Reservation (ずっと予約)

A reservation is automatically made each month until your child leaves the school.

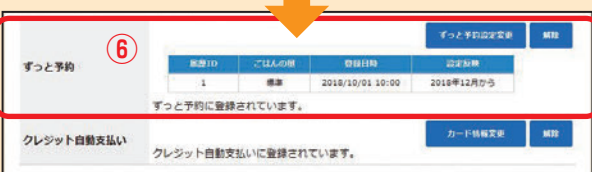
- ① Enter the user ID and password provided in the Reservation System Login Notice (予約システムログイン通知書) to log in to the system.



- ② Click "Set up an Auto-Renewing Reservation (ずっと予約する)" on the starting page for the School Lunch Reservation System.



- ⑤ After the registration is completed, a message such as the one shown above is indicated on the starting page. Please note that Auto-Renewing Reservation starts from the month following the next month and that you are requested to refer to "Monthly Reservation (by PC or smartphone)" on page 7 and make a reservation for the next month on your own. You can check the current status of your registration on the "Personal Setting (個人設定)" screen.



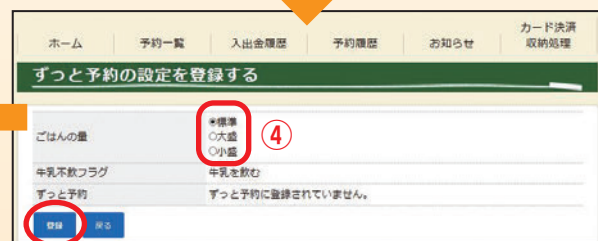
- ⑥ You can check the current status of your registration for "Auto-Renewing Reservation (ずっと予約)" in the lower part of the "Personal Setting (個人設定)" screen.

Monthly Schedule

- 1st of the month** A reservation is automatically made for the following month.
- End of the month** Meal coupons for the following month are delivered to you.



- ③ Click "Click here to register (登録はこちら)."



- ④ Select a portion size of rice/bread and click "Submit Registration (登録)." This is the end of your registration.

You can also register for "Auto-Renewing Reservation (ずっと予約)" by submitting an application form (申請書). If you need an application form, please obtain one in the school's serving room (配膳室). After completing the form, submit it to the school.

The first automatic reservation is made for the second month after your registration for Auto-Renewing Reservation (ずっと予約).

Monthly Reservation (by PC or smartphone) (毎月予約(パソコン・スマートフォン))

Make a reservation each month for school meals for the next month.

① Enter the user ID and password provided in the Reservation System Login Notice (予約システムログイン通知書) to log in to the system.



② Click "Next month (次月へ)" to show the month for which you will make a reservation.
③ Click "Make a monthly reservation (1か月分一括予約する)."

Deadline for reservation by PC or smartphone: 20th of each month

Note: In the calendar on the reservation screen, the words "No service (休み)" are shown under dates when school lunch service is unavailable due to a school event or other reasons.



④ Click the portion size of rice/bread of your choice (Small [小盛], Regular [標準] or Large [大盛]).
*Once you choose a size, it applies throughout the month.
*If your child has been approved as having a reason not to drink milk, the price of milk is automatically deducted from each school lunch meal fee.



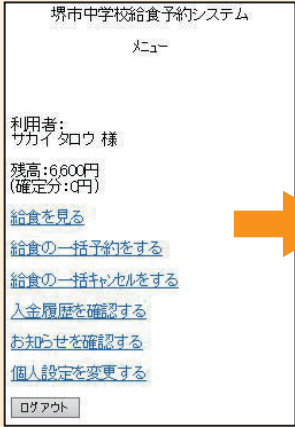
⑤ Your reservation is complete when the reservation results are shown on the screen.

Monthly Reservation (by mobile phone)

Make a reservation each month for school meals for the next month.

① Enter the user ID and password provided in the Reservation System Login Notice (予約システムログイン通知書) to log in to the system.

Deadline for reservation by mobile phone : 20th of each month



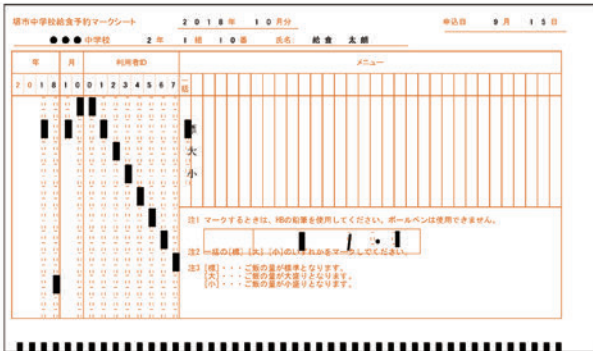
② The system menu is shown. Select "Make a monthly reservation for school lunch meals (給食の一括予約をする)."



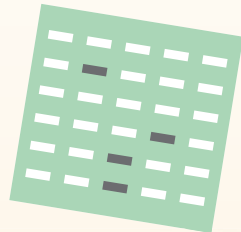
③ Click the portion size of rice/bread of your choice (Small [小盛], Regular [標準] or Large [大盛]).

Monthly Reservation (by mark sensing card) (毎月予約 (マークシート))

When making a reservation without using a PC, smartphone or mobile phone



- 1 Fill in required information on a mark sensing card and submit it to your child's school. Mark sensing cards are available in the serving room at each school.



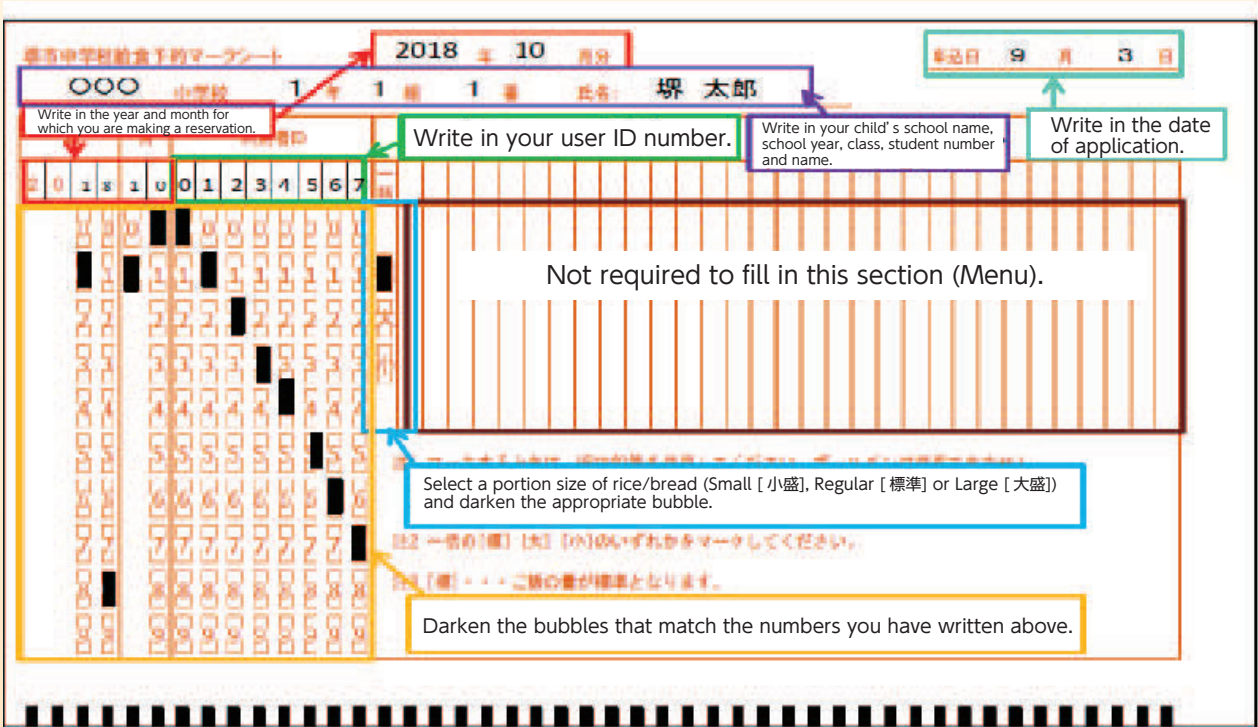
Deadline for reservation by mark sensing card: **10th** of each month



- 2 After making a reservation using a mark sensing card, you will receive a "Mark Sensing Card Reservation Acceptance Notice (マークシート申込通知書)" through your child's school. Please check your reservation results and the remaining balance with this notice.

※If the remaining balance is insufficient, a reservation cannot be accepted. In such a case, the notice will

How to fill out a mark sensing card



STEP 4 Receive coupons

After your reservation is accepted, you will receive meal coupons from your child's school.

STEP 5 Pick up

Your child can pick up a school lunch meal in exchange for a meal coupon in a serving room at lunchtime.

◆ Receiving a refund

School lunch meals are paid for in advance. When your child leaves school or transfers to a school in another city, you will receive a Refund Notice (清算通知書) from his/her school. It takes a few days for you to receive a refund after informing your child's school about your child's transferring to a school in another city. Therefore, please inform your child's school well in advance. When your child leaves school, you are expected to receive a refund in late March.

◆ Reservation cancellations in case of classroom and school closures

If your child's school informs the Board of Education about a classroom closure before 10 am, lunch reservations for a fixed period from the day after next can be cancelled. In such a case, the school cancels reservations for all students involved. You do not need to cancel your reservations yourself.

If your child's school is temporarily closed due to a natural disaster or another unavoidable reason, you cannot receive a refund, because ingredients for a school lunch meal have already been purchased with your school lunch meal fee and prepared.

◆ Reservation cancellations due to absence from school

If your child cannot consume school lunch because of sudden absence due to illness or other personal reasons, you cannot cancel a school lunch reservation, because ingredients for a school lunch meal have already been purchased and prepared.

◆ Dealing with emergency situations

Extra school lunch meals or substitute meals (e.g. ready-made curry in a sealed pouch) are provided when school lunch service is unavailable due to unexpected reasons. You cannot obtain a refund even if a school lunch meal cannot be provided due to an unexpected reason, because the fee for a school lunch meal for the day paid by each parent/guardian has already been spent to purchase the ingredients.

◆ Student financial aid

School lunch fees are not covered by the School Expense Subsidy program (就学援助). However, families receiving public assistance (生活保護) can receive financial aid equivalent to the actual school lunch fees from the Public Assistance Division (生活援護課) of their local ward office. For more information, please contact your caseworker.

* All school lunch fees paid by parents/guardians of students are transferred into the account of Sakai School Lunch Association, which purchases ingredients for school lunch meals.



School lunch service, food allergy, etc.

Q Is there anything students should bring from home for school lunch?

A They should bring chopsticks every day and a spoon on days marked in a school lunch meal calendar.

Q Does a school meal provider omit or substitute certain ingredients for food-allergic students?

A No, unfortunately, they are unable to do so. Parents/guardians are requested to check food allergy information provided in school lunch meal calendars, and from other sources and make reservation decisions. Please see “School Lunch Meal Menus” in page 1.

Q My child has no milk allergy, but he hates to drink milk. Can I exclude drinking milk from his school lunch?

A Only students who cannot drink milk due to milk allergy, lactose intolerance or other good reasons can choose not to drink milk. Please see “School Lunch Meal Menus” in page 1.

School lunch reservation cancellations

Q Why can't I cancel a reservation for a school lunch meal for a day when my child is absent from school due to sudden illness or when the school is closed due to a storm warning or other weather alerts?

A Same as in the case of the elementary school lunch program, school lunch meals for junior high school students cannot also be cancelled in such cases, because ingredients for a school lunch meal have already been purchased and prepared. Please see “◆Reservation cancellations due to absence from school” in “Steps to Access School Lunch Service” on page 9.

Q Can I cancel a reservation for a school lunch meal on a day when it is not served due to a classroom closure or other reasons?

A In case of a classroom closure, a reservation for a fixed period from the day after next can be cancelled. However, you do not need to cancel your reservation yourself. Your school cancels lunch reservations for all students involved. Please see “◆Reservation cancellations in case of classroom and school closures” in “Steps to Access School Lunch Service” on page 9.

Q I would like to cancel my reservation because my child will transfer to another school. How can I do this?

A You can cancel a reservation due to changing schools or other special reasons. Please contact your child's school as soon as possible.

School Lunch Reservation System

Q After I paid for school lunch meals, I tried to make a reservation using the Sakai City School Lunch Reservation System, but I couldn't. Why?

A Depending on your payment method, please allow time as indicated below.
Cash payment at a convenience store using a payment slip (払込取扱票): You can make a reservation after 4 pm two days (excluding Saturday and Sunday) after the payment.
Credit card payment: After a credit card payment transaction is completed, you can make a reservation (it may take about an hour for the transaction results to be reflected in your school lunch account balance.)

Q I lost the Reservation System Login Notice (予約システムログイン通知書) and payment slips. What can I do?

A Please contact Sakai City Junior High School Lunch Program Call Center (Futureinn Co., Ltd.) at 052-732-8948 (in Japanese only). You can then receive a notice and payment slips again through the child's school in a week or so. A new user ID and password cannot be given to you by phone for the protection of personal data. However, if you have registered your e-mail address in the School Lunch Reservation System in advance, you can receive your user ID and password by e-mail.

Q When can I receive a refund for school lunch meals?

A You can receive a refund when your child leaves school or transfers to a school in another city. Please see “◆Receiving a refund” in “Steps to Access School Lunch Service” on page 9.

Auto-Renewing Reservation (ずっと予約) and Automatic Credit Card Payment (クレジット自動支払い)

Q I often forget to make a school lunch reservation. Is there any convenient way to make a reservation?

A We recommend to register for Auto-Renewing Reservation (ずっと予約) so that you do not have to worry about forgetting to make a reservation each month. If you choose the Auto-Renewing Reservation, a reservation is automatically made on the 1st of each month (excluding Saturday and Sunday) for school lunch meals for the next month.

A combination of Auto-Renewing Reservation and Automatic Credit Card Payment (クレジット自動支払い) can make your monthly reservation and payment completely automatic.

Q When should I pay school lunch meal fees if I choose Auto-Renewing Reservation (ずっと予約)?

A Check your school lunch account balance and pay by the date when a reservation is automatically made. If the balance is insufficient, a reservation cannot be made. (In such a case, you will receive a notice through the school.) Automatic Credit Card Payment (クレジット自動支払い) is a convenient choice to ensure that you always have a sufficient account balance.

Q I have registered for Auto-Renewing Reservation (ずっと予約). I recently received a notice showing an insufficient account balance. I'd like to make a reservation for next month. What should I do?

A Please pay for the next month first. Then make a reservation on your own using the School Lunch Reservation System or a mark sensing card. Please note that even if you have registered for Auto-Renewing Reservation, a reservation cannot be automatically made with an insufficient amount in your school lunch account.

Q I have registered for Auto-Renewing Reservation (ずっと予約). I'd like to cancel the school lunch service for a month only. How can I do this?

A Even if you have registered for Auto-Renewing Reservation, you can cancel a reservation for one month during the reservation period (from the 1st to the 20th of the preceding month). Please cancel your reservation using the School Lunch Reservation System. If you do not use the system, please contact the Health and School Lunch Division.

Q I'd like to make changes to the information I entered for registration for Auto-Renewing Reservation (ずっと予約) and Automatic Credit Card Payment (クレジット自動支払い). How can I do that? And what should I do to modify my credit card information?

A You can modify the information you entered for Auto-Renewing Reservation and Automatic Credit Card Payment on the “Personal Setting (個人設定)” page. And you can modify your credit card information on the “Credit Card Payment Transaction (カード決済収納処理)” page.

※参考

* Please click “Help (ヘルプ)” in the lower right portion of the home screen to see more information about how to use the system (In Japanese only).